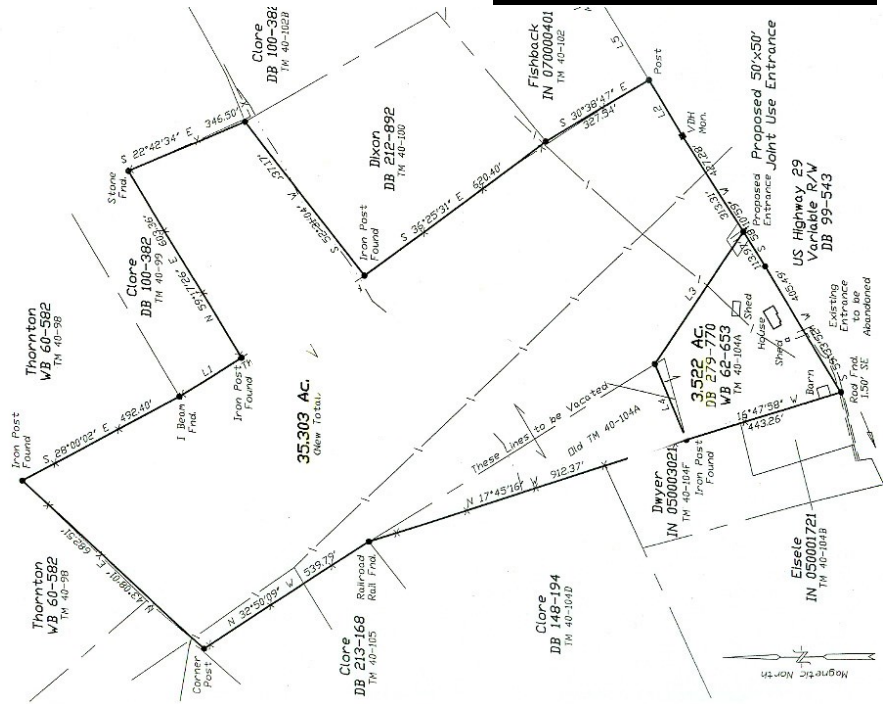


35+ ACRES—MADISON COUNTY
US 29 FRONTAGE—\$280,000



DIRECTIONS: From The Town of Madison take US 29 north 1/2 mile. Property on left. Sign up.

Tax Map 40-103
2013 Real Est. Taxes: TBD
Zoned: A-1



This property has a mix of open and wooded rolling land with an all weather stream. The owner has the land fenced for cattle, but it can also be used for horses and niche sustainable agricultural production. There is a beautiful building location with mountain views for a future home. In addition, the US 29 frontage adds to the long term investment potential Call Bill Gentry, Broker for more detailed information.



"Specialists in Fine Country Properties of Central Virginia"

Jefferson Land & Realty

40 Commerce Lane, Suite A, Rochelle, VA 22738

Tel: 540-948-5050 Fax: 540-948-4190

www.Jefferson-land.com Jeffersonland@gmail.com

INFORMATION DEEMED RELIABLE, BUT NOT GUARANTEED

